

Wellfleet, Cape Cod,
Massachusetts, USA

Lieutenant Island Residence

Hammer Architects

The desire to take advantage of exceptional views, provide a variety of spatial experiences within the confines of a small programme and embrace the outdoors were the primary design objectives for this house. The site is a heavily wooded bluff overlooking Cape Cod Bay where pine, bayberry and oak predominate. The house is intended to harmonise with the natural landscape and sits on a base that incorporates timbers and bluestone pavers and terraces from the natural grade, providing a sense that the built environment grows out of the hillside.

The entry side is a platform-framed box. Small punched windows present a private formal façade and enclose an entry hall, stair, kitchen and master bedroom suite. This volume expands into a two-storey living-dining room with a large window wall that faces north to the primary view of Cape Cod Bay. Since the natural grade of the land rises towards the water, the living room is elevated above the first floor for better access to the views. It also provides a partial enclosure for the dining area with built-in bookcases and seating.

The master bedroom and a library both have balconies that open to the living room from the second floor. A deck above the screened porch is accessed from the bedroom and offers additional views of Cape Cod Bay. The pergola structure affords a shaded outdoor retreat as an alternative to the open terrace.

Two guest bedrooms located off the main public living space each have a small deck and access to an outdoor shower. An office workspace located at the end of the corridor that runs alongside the living room offers privacy. Its plan is rotated and provides different views of the bay than those seen from the living room.

Natural ventilation was a critical design concern as the house is occupied primarily during the summer months. The sloped ceiling of the main living space that follows the stepped section directs warm air to several sets of motorised awning windows. These windows are in turn shielded from rain and sun by the overhanging roof.

1
2
3



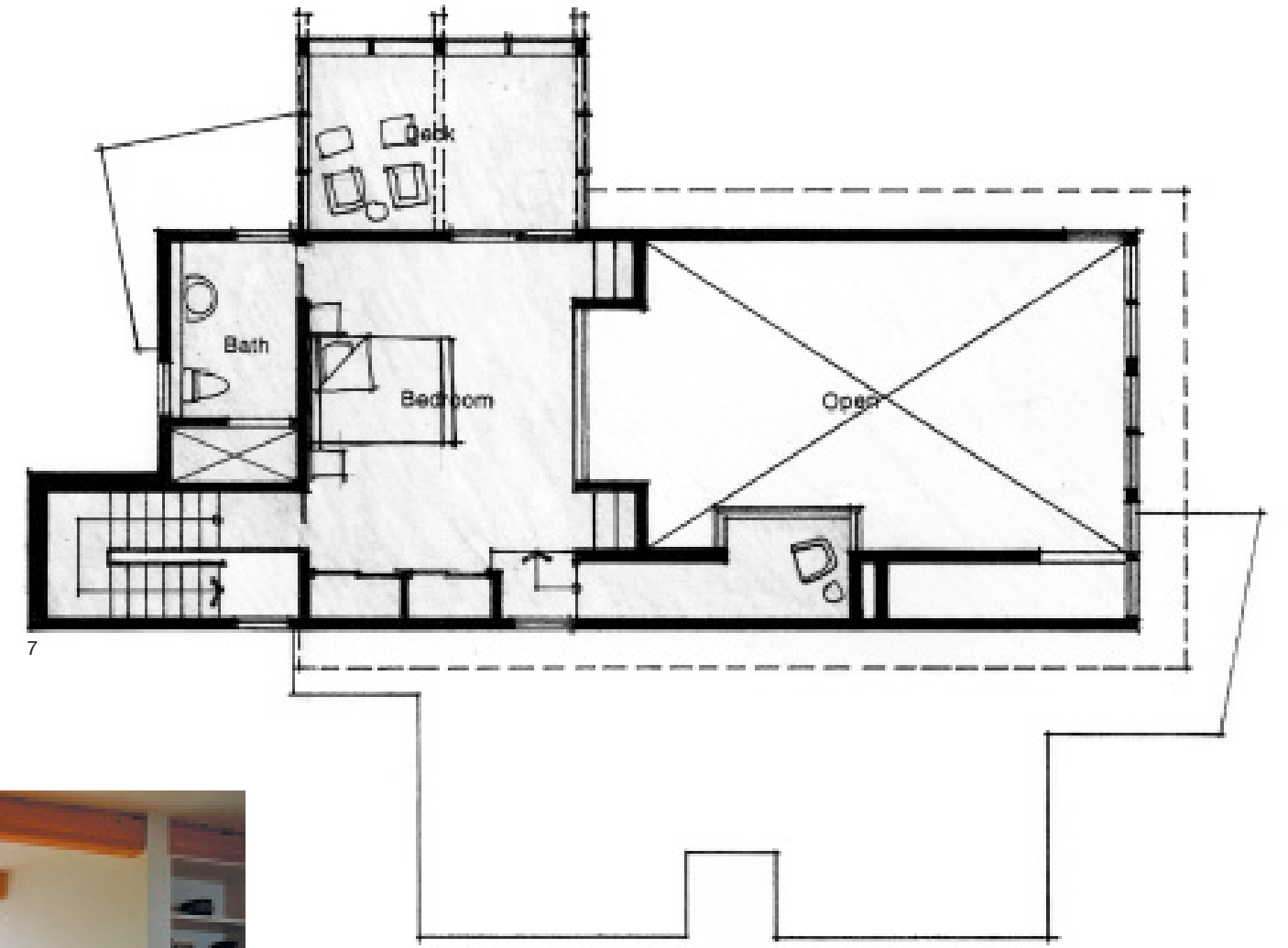
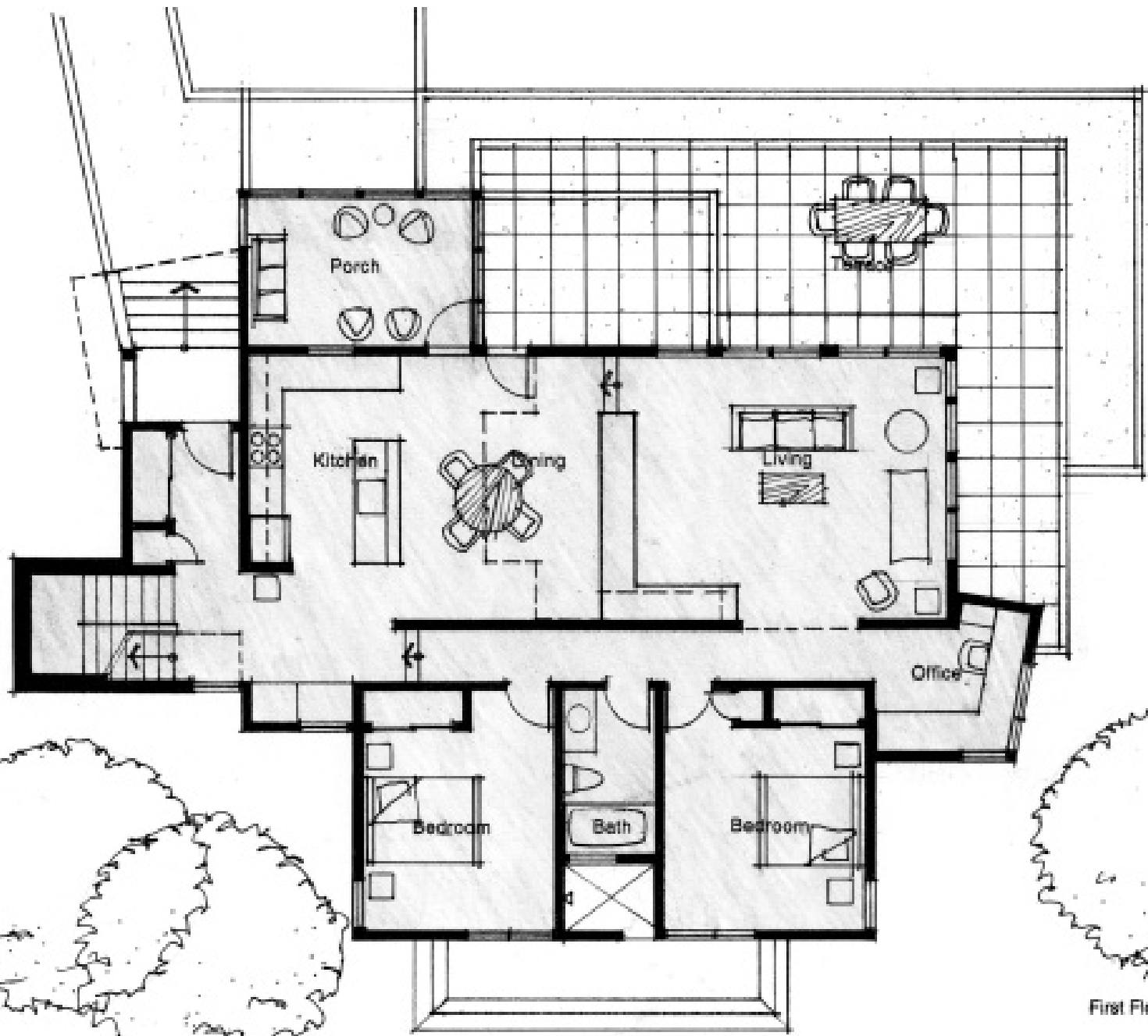
1



2



3



First Floor Plan

4

4

5

6

7

4
5
6
7